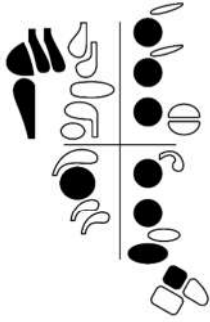
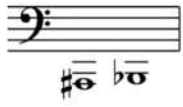


Bassoon

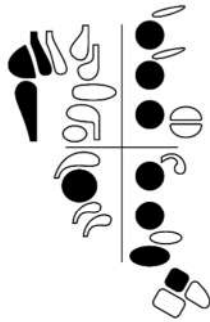
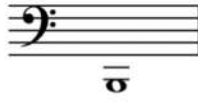
Fingering Chart



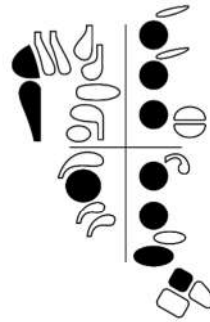
A# / Bb



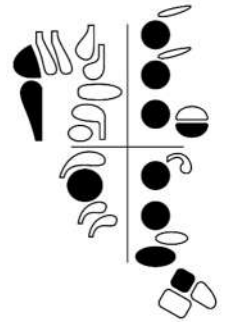
B



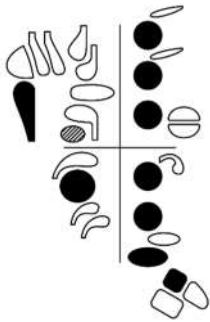
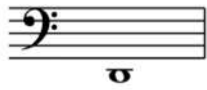
C



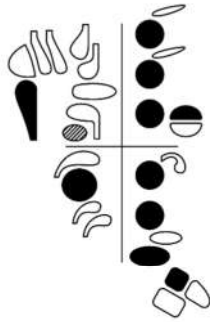
C# / Db



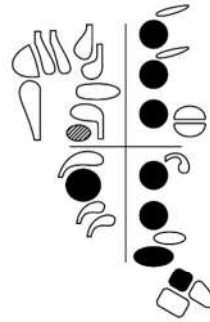
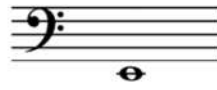
D



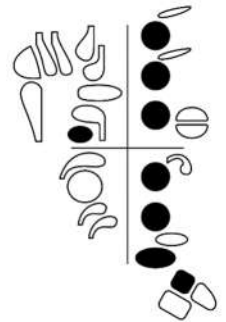
D# / Eb



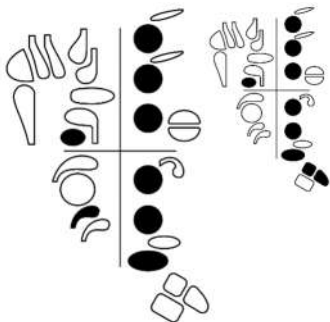
E



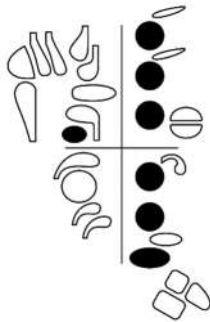
F



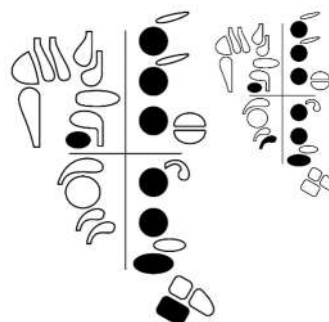
F# / Gb



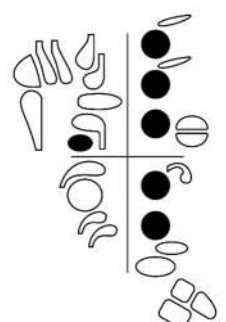
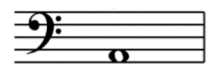
G



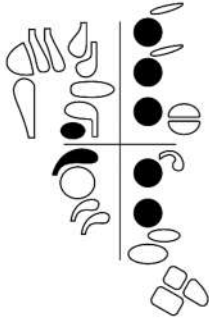
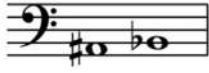
G# / Ab



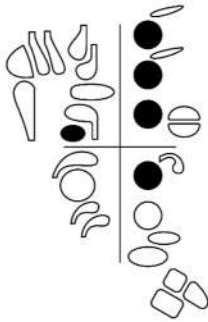
A



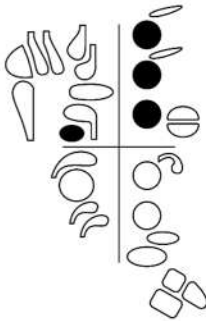
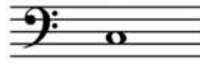
A# / Bb



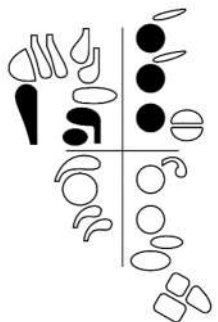
B



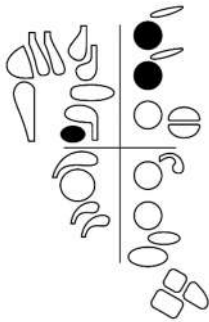
C



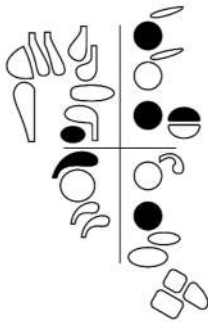
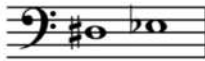
C# / Db



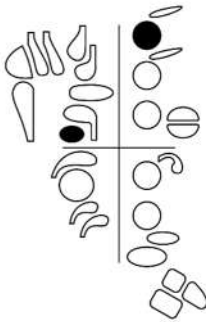
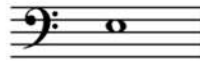
D



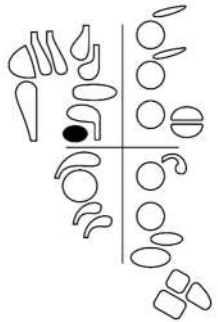
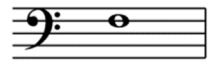
D# / Eb



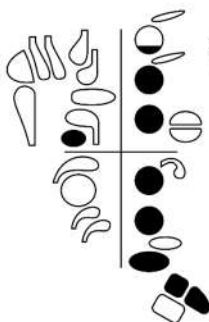
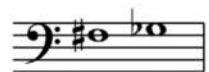
E



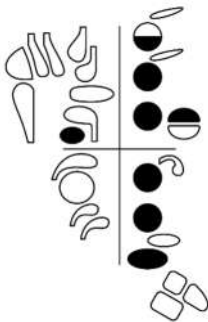
F



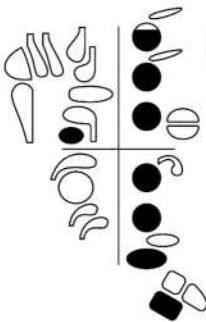
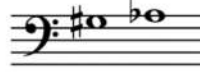
F# / Gb



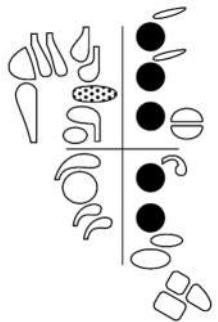
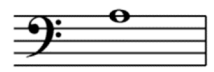
G



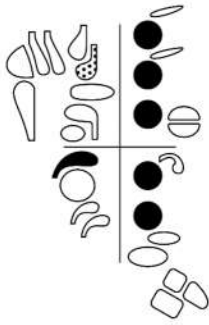
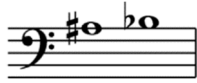
G# / Ab



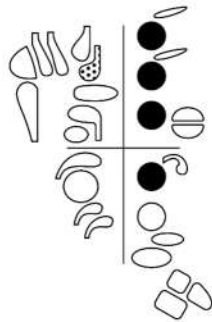
A



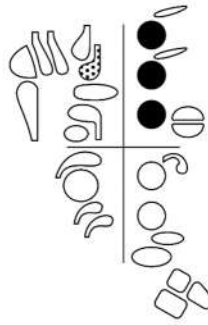
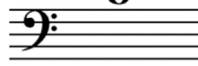
A# / Bb



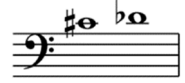
B



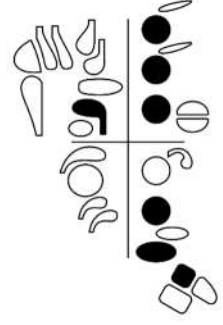
C



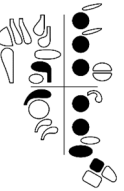
C# / Db



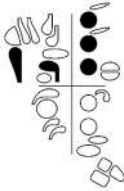
Medium fingering



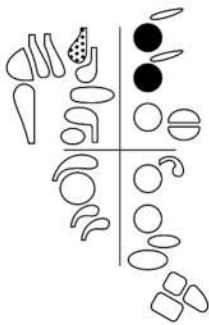
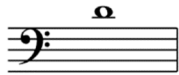
Long fingering
This fingering has the best tone and projection



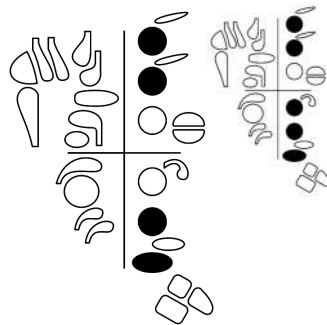
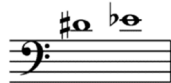
Short fingering
Use this fingering if you can't reach the other two



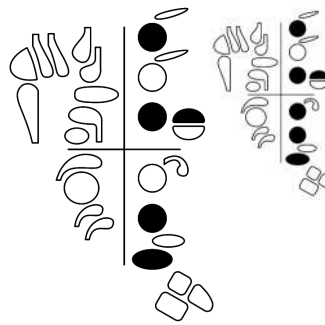
D



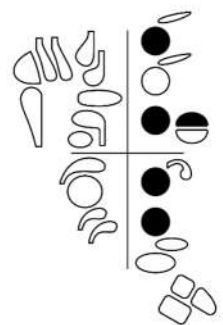
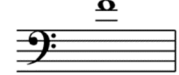
D# / Eb





E





F



 = Flick this key

 = Flick this key

 = Flick this key

 = This key is optional