

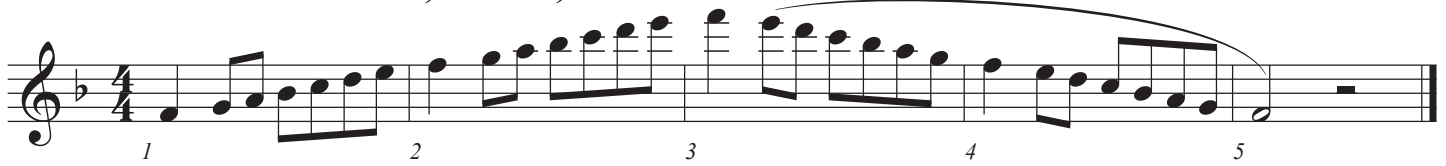
# Bearcat Band Standard Scales

No fingerings or note names should be written on this music.

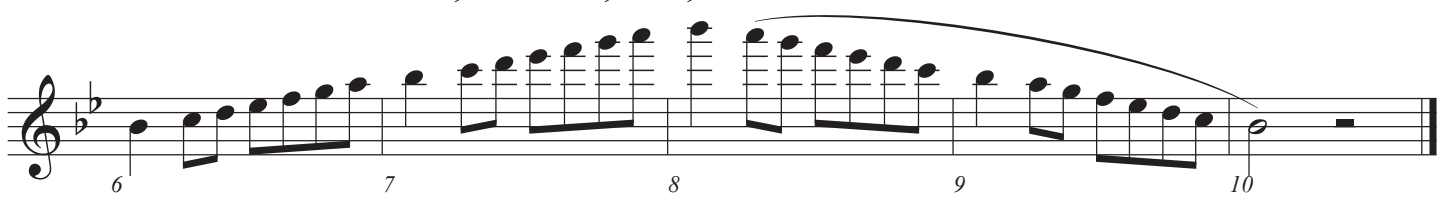
Circle the notes that are sharp or flat in each scale.

The Feisty Flamingo

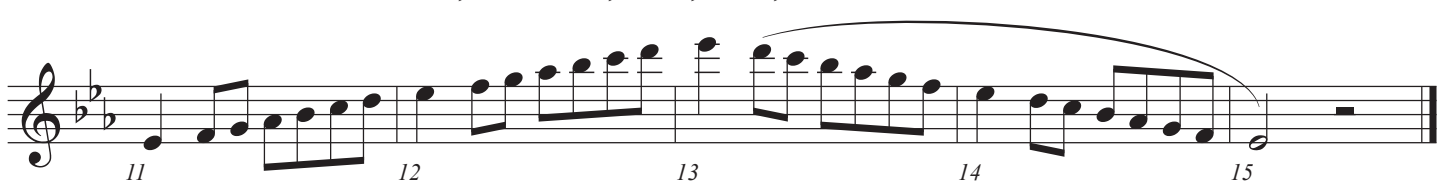
## Chant: Concert F; 1 flat, Bb



## Chant: Concert Bb; 2 flats, Bb, Eb



## Chant: Concert Eb; 3 flats, Bb, Eb, Ab



## Chant: Concert Ab; 4 flats, Bb, Eb, Ab, Db



**Chant: Concert Db; 5 flats, Bb, Eb, Ab, Db, Gb**

Musical notation for the Concert Db scale, measures 21-25. The scale is written in a single line of music with a treble clef and a key signature of five flats (Bb, Eb, Ab, Db, Gb). The notes are: 21 (Bb), 22 (Eb), 23 (Ab), 24 (Db), 25 (Gb). A slur covers measures 23, 24, and 25.

**Chant: Concert G; 1 sharp, F#**

Musical notation for the Concert G scale, measures 26-30. The scale is written in a single line of music with a treble clef and a key signature of one sharp (F#). The notes are: 26 (G), 27 (A), 28 (B), 29 (C), 30 (D). A slur covers measures 28, 29, and 30.

**Chant: Concert C; No sharps, No flats; In this key we play for 3**

Musical notation for the Concert C scale, measures 31-37. The scale is written in two lines of music with a treble clef and a key signature of no sharps or flats. The notes are: 31 (C), 32 (D), 33 (E), 34 (F), 35 (G), 36 (A), 37 (B). A slur covers measures 34, 35, 36, and 37.

**Chant: Chromatic Scale, the scale of half steps. I play all my notes. HUH!**

Musical notation for the Chromatic Scale, measures 38-47. The scale is written in two lines of music with a treble clef. The notes are: 38 (C), 39 (C#), 40 (D), 41 (D#), 42 (E), 43 (E#), 44 (F), 45 (F#), 46 (G), 47 (G#). A slur covers measures 42, 43, 44, 45, 46, and 47.