

Bearcat Band Standard Scales

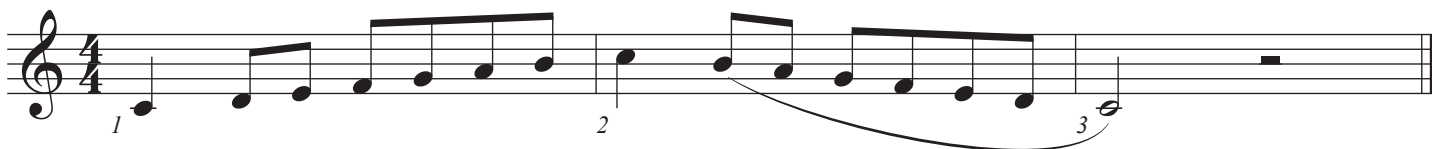
No fingerings or note names should be written on this music.

Circle the notes that are sharp or flat in each scale.

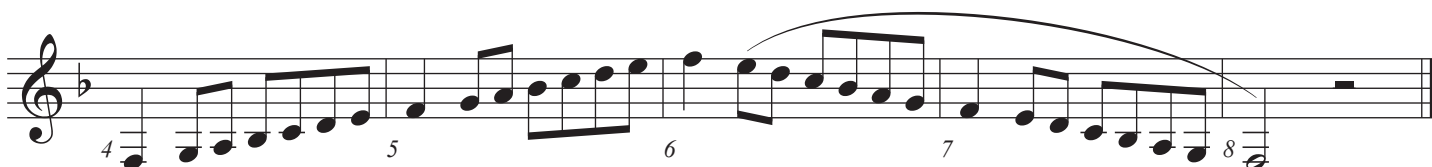
Horn

The Feisty Flamingo

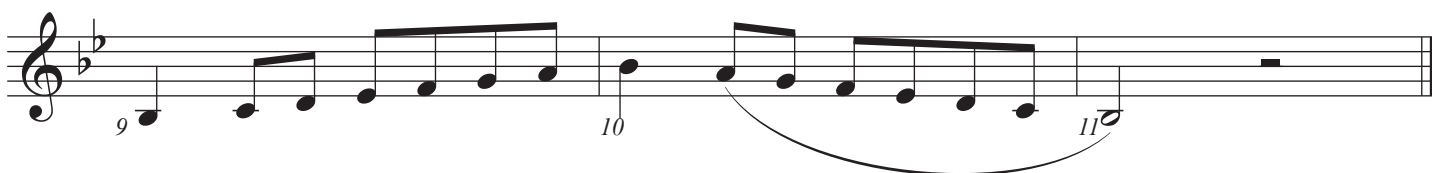
Chant: **Concert F, French Horn C; No sharps, No flats**



Chant: **Concert Bb, French Horn F; 1 flat, Bb**



Chant: **Concert Eb, French Horn Bb; 2 flats, Bb, Eb**



Chant: **Concert Ab, French Horn Eb; 3 flats, Bb, Eb, Ab**



Chant: Concert Db, French Horn Ab; 4 flats, Bb, Eb, Ab, Db

Musical notation for the Concert Db scale, measures 15-17. The scale is written in treble clef with a key signature of four flats (Bb, Eb, Ab, Db). Measure 15 starts with a whole note Bb. Measure 16 contains a half-note pair (C, Cb) and a half-note pair (D, Db). Measure 17 contains a half-note pair (Eb, E) and a half-note pair (F, Fb), with a slur over the entire measure.

Chant: Concert G, French Horn D; 2 sharps, F#, C#

Musical notation for the Concert G scale, measures 18-20. The scale is written in treble clef with a key signature of two sharps (F#, C#). Measure 18 starts with a whole note G. Measure 19 contains a half-note pair (A, Ab) and a half-note pair (B, Bb). Measure 20 contains a half-note pair (C, Cb) and a half-note pair (D, Db), with a slur over the entire measure.

Chant: Concert C, French Horn G; 1 sharp, F#

Musical notation for the Concert C scale, measures 21-25. The scale is written in treble clef with a key signature of one sharp (F#). Measure 21 starts with a whole note C. Measure 22 contains a half-note pair (D, Db) and a half-note pair (E, Eb). Measure 23 contains a half-note pair (F, Fb) and a half-note pair (G, Gb). Measure 24 contains a half-note pair (A, Ab) and a half-note pair (B, Bb), with a slur over the entire measure. Measure 25 contains a whole note C.

Chant: Chromatic Scale, the scale of half steps. I play all my notes. HUH!

Musical notation for the Chromatic Scale, measures 26-28. The scale is written in treble clef. Measure 26 starts with a whole note C. Measure 27 contains a half-note pair (C#, C) and a half-note pair (D, Db). Measure 28 contains a half-note pair (E, Eb) and a half-note pair (F, Fb).

Musical notation for the Chromatic Scale, measures 29-32. The scale is written in treble clef. Measure 29 contains a half-note pair (F#, F) and a half-note pair (G, Gb). Measure 30 contains a half-note pair (A, Ab) and a half-note pair (B, Bb). Measure 31 contains a half-note pair (C, Cb) and a half-note pair (D, Db). Measure 32 contains a whole note C.