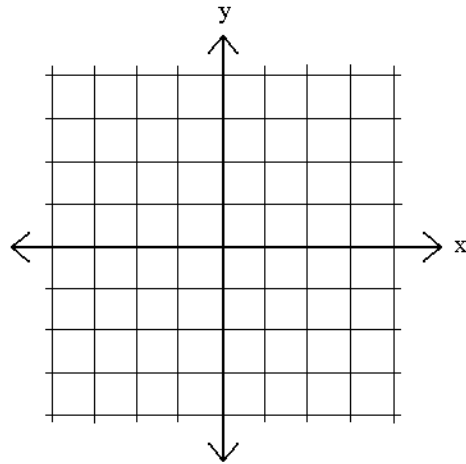
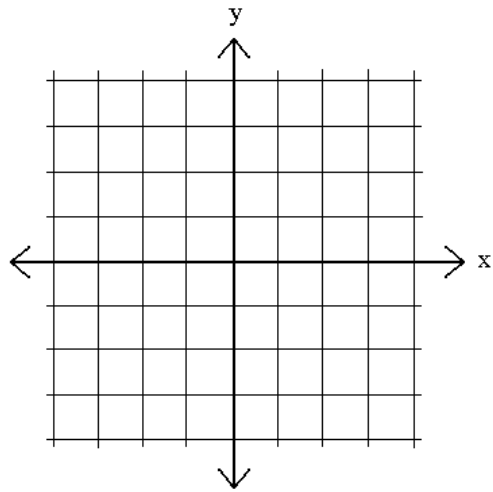
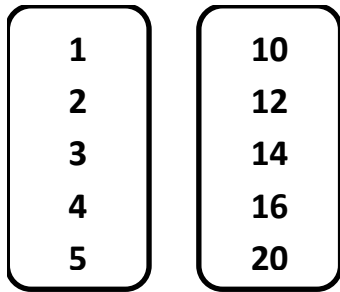


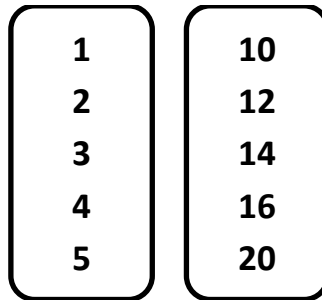
1) Draw a graph that is a proportional linear function. Draw a graph that is a non-linear function



Make this map a function.

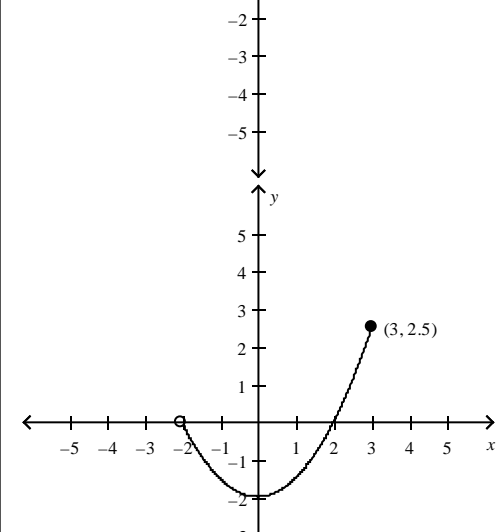
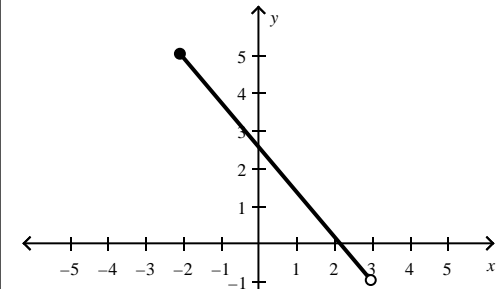


Make this map not a function.



2) Solve the function $f(x) = 3x + 5$ for the values of $\{3, 5, 12\}$

3) What is the domain and range of each figure?



4) Write a function for each of these tables?

x	f(x)
0	5
1	8
2	11
3	14
4	17

x	f(x)
0	3
1	-2
2	-7
3	-12
4	-17

x	f(x)
0	
1	4
2	2.75
3	1.5
4	0.25

x	f(x)
0	
1	13
2	27
3	41
4	55

x	f(x)
0	
1	5.7
2	3.2
3	0.7
4	-1.8